



CE n55Plus

CI/SfB

Tn6 L14143

March 2021

# RIW DPM BLUE

DPM Blue is a three-layer, low density polyethylene membrane with a polypropylene reinforcing grid.

## BENEFITS

- | Manufactured from virgin material, not recycled waste
- | Robust jointing and sealing system
- | Welded joints possible
- | Single wound membrane with zero creases
- | Two colour membrane for on-site quality control

## APPLICATIONS

- | Combined ground floor damp proof membrane and radon barrier

## APPLIED TO

- | Sand blinding
- | Suspended floors
- | Ground bearing slabs

REMEMBER IT'S  
**waterproof** RIW

# RIW DPM BLUE

## TYPICAL USES

DPM Blue is typically used as a low density, polyethylene gas barrier and damp proof membrane.

The installed product protects the structure against moisture and radon from the ground.

The product is suitable for use above or below ground bearing reinforced concrete slabs, and above suspended beam and block floors or precast concrete slabs.

## DURABILITY

Subject to normal conditions of use DPM Blue will remain effective against the ingress of water and water vapour, and will restrict the ingress of radon during the lifetime of the building.

## SPECIFICATION

J40 Flexible sheet waterproofing / damp proofing  
Clause 140 Loose laid polyethylene gas retardant damp proofing.  
Please consult RIW for further information.

## INDEPENDENT AUTHORITY

DPM Blue has been awarded a BBA Certificate No. 14/5156 covering its use as a low density, polyethylene gas barrier and damp proof membrane in concrete ground floors, above and below the slab not subject to hydrostatic pressure, to protect the building against moisture and radon.

CE Marked to BS EN 13967: 2012. For Declaration of Performance see:

<http://www.riw.co.uk/technical-downloads/ce-marking>

## PERFORMANCE & COMPOSITION

Form	loose laid composite sheet
Colour	blue/white
Overall thickness	0.5mm
Roll size	2m wide x 50m long*
Weight	275g/m <sup>2</sup> = 27.5kg/roll
Laps	150mm
Tensile strength MD EN 12311-1 CD	500N/50mm 470N/50mm
Elongation MD EN12311-1 CD	15% 20%
Nail tear resistance MD EN 12311 -1 CD	400N 350N
Radon permeability	4.3 x 10 <sup>-12</sup> m <sup>2</sup> . s <sup>-1</sup>

The above performance figures are typical values and should not be considered a product specification. \*Other roll sizes available.

## ANCILLARY PRODUCTS

RIW produce a range of ancillary products for use with DPM Blue which include:

**Seal Tape** - double-sided self-adhesive butyl tape for sealing between overlaps in the membrane.

**Lap Tape** - single-sided self-adhesive PVC tape for sealing edges of lapped product when used as a radon barrier.

**Preformed pipe collars** - flexible collar for sealing around pipe penetrations.

**Sheetseal 9000 DPC** - polymeric damp proof course/ cavity tray for building into masonry.

## CONSTRUCTION

### GENERAL

All construction should conform with the Building Regulations, Codes of Practice and British Standards in current use at the time the building is being constructed.

### PREPARATION

The membrane should be laid on a smooth surface, free from voids, hollows and objects which may damage the membrane. If used below a ground bearing slab, the product may be laid on a sand blinding.

## APPLICATION

The completed damp proof membrane and radon barrier must cover the entire footprint of the building, when linked to DPCs/cavity drain trays as required.

DPM Blue should be unrolled onto the prepared surface, and be smoothed out as necessary. The product must be installed with the blue side uppermost.

Subsequent rolls should then be lapped onto the previous roll by 150mm, and be sealed using Seal Tape placed centrally in the lap. When a barrier to radon is required, Lap Tape should then be laid over the edge of the upper sheet, by 50mm, and be adhered down onto the lower sheet.

Pipe penetrations should be sealed using Preformed Pipe Collars; sealed to the membrane, and pipe using Seal Tape and Lap Tape; see Pipe Penetration Detail.

Sheetseal 9000 DPC should be used to provide continuity through the walls, with DPM Blue lapped and sealed onto it using Seal Tape and Lap Tape as before.

Damaged areas should be patch repaired as necessary, using similar lapping/sealing details.

## SPECIFIC USES

Where a radon barrier is required, DPM Blue should be installed with the ancillary products necessary, in accordance with current guidance for gas protection systems; including BRE211.

## SAFETY

Full health and safety instructions are contained on the product material safety data sheets, and these must be referred to before use.

## SUPPLY

### AVAILABILITY

All products can be obtained through Builders Merchants or approved stockists. A list of approved stockists is available from RIW's offices.

### PACKAGING

DPM Blue 2m wide x 50m long rolls

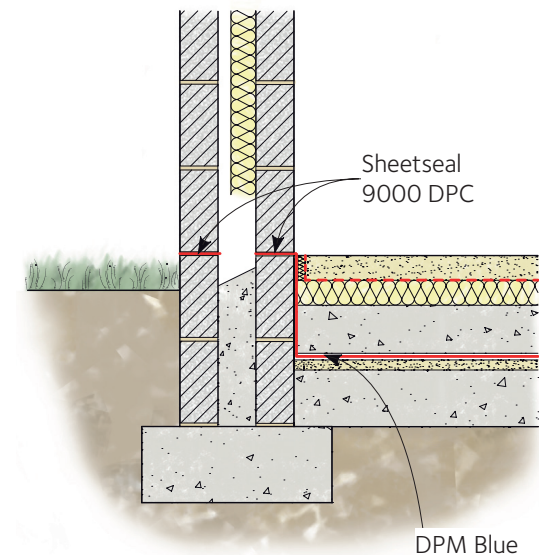
### STORAGE

The rolls must be stacked on a flat surface, kept under cover and protected from sunlight and mechanical damage.

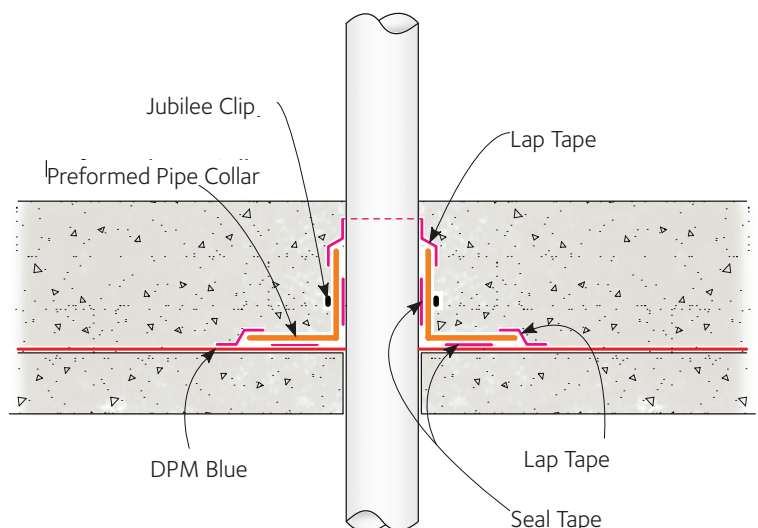
## TECHNICAL SERVICES

The Technical Department is available to advise on individual projects and to prepare or assist in the preparation of specifications and drawings.

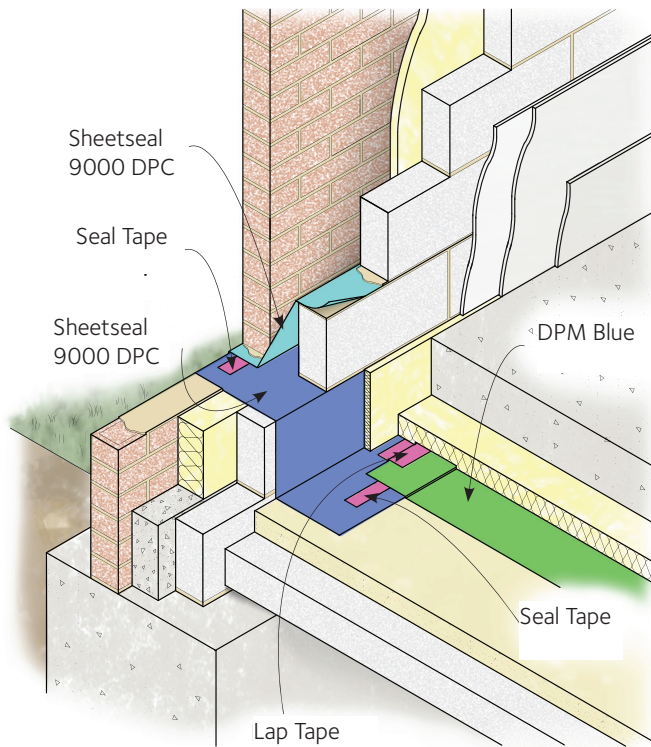
A list of experienced applicators of our materials is available from RIW's offices, along with a list of independent consultants providing validation and integrity testing services.



Typical Ground Bearing Slab



Pipe Penetration Detail



**Typical Ground Bearing Slab  
(where radon barrier is required)**

The information in this literature was correct at the time of going to press. However, we are committed to continually improving our products and reserve the right to change product specifications.

For the latest information, please consult RIW. Conditions of use are beyond our control, therefore we cannot warrant the results to be obtained.

---

**RIW Limited**

487-488 Ipswich Road, Slough, SL1 4EP

Technical enquires tel: **01753 944200**

Commercial enquires tel: **01753 944210**

**[www.riw.co.uk](http://www.riw.co.uk)**

REMEMBER IT'S  
**waterproof** **RIW**